



**TATHASTU**

—GLOBAL FILM COMPANY—

# PRODUCT CATALOGUE

tathastumedia19@gmail.com

+44 (0) 7367 656522



## Tathastu Precision FHX-25 Fluid Head

### Description:

The Tathastu Precision FHX-25 delivers smooth, precise pan and tilt movements for professional cinema cameras. With a high-performance counterbalance system, adjustable drag control, and industry-standard compatibility, it ensures seamless operation for studio and on-location shoots. Built for durability and precision, it's the perfect choice for filmmakers seeking reliability and smooth motion.

### Key Features:

- Supports up to 75 kgs
- Precision Counterbalance System
- Smooth Pan & Tilt Fluid Drag
- Adjustable Drag Control
- Quick-Release Camera Plate
- Mitchell Mount & 150mm Bowl Compatibility
- Durable Aluminium Alloy Construction

### Kit Contents:

- FHX-25 Fluid Head
- Quick-Release Camera Plate
- Pan Handle
- Tie-Down Knob
- Transport Case
- User Manual

## Sony venice rialto camera cage

### Description:

A lightweight, durable, and modular camera cage designed for the Sony Venice Rialto Extension. Built from CNC-machined aluminum, it provides secure mounting options for accessories while ensuring maximum protection and flexibility for professional setups.

### Key Features:

- Precision CNC-Machined Aluminum Construction – Ensures durability and lightweight performance.
- Modular Design – Provides flexibility for various rigging setups.
- Multiple 1/4"-20 and 3/8"-16 Threaded Holes – Enables secure mounting of accessories.
- Ergonomic Top Handle – Offers a firm grip for handheld operation.
- Side Plates with Mounting Points – Enhances accessory attachment options.
- Baseplate with 15mm Rod Support – Allows easy integration of matte boxes, follow focus, and other rod-based accessories.

### Kit Contents:

- Top Handle with Mounting Points (Quick Release)
- Side Plates (Left & Right) with Multiple Mounting Threads
- Baseplate with 15mm LWS Rod Support
- Bridge Plate Adapter
- Dovetail Plate with Locking Mechanism
- Extension Arm for Rigging Support



## 19mm universal camera bridge plate

### Description:

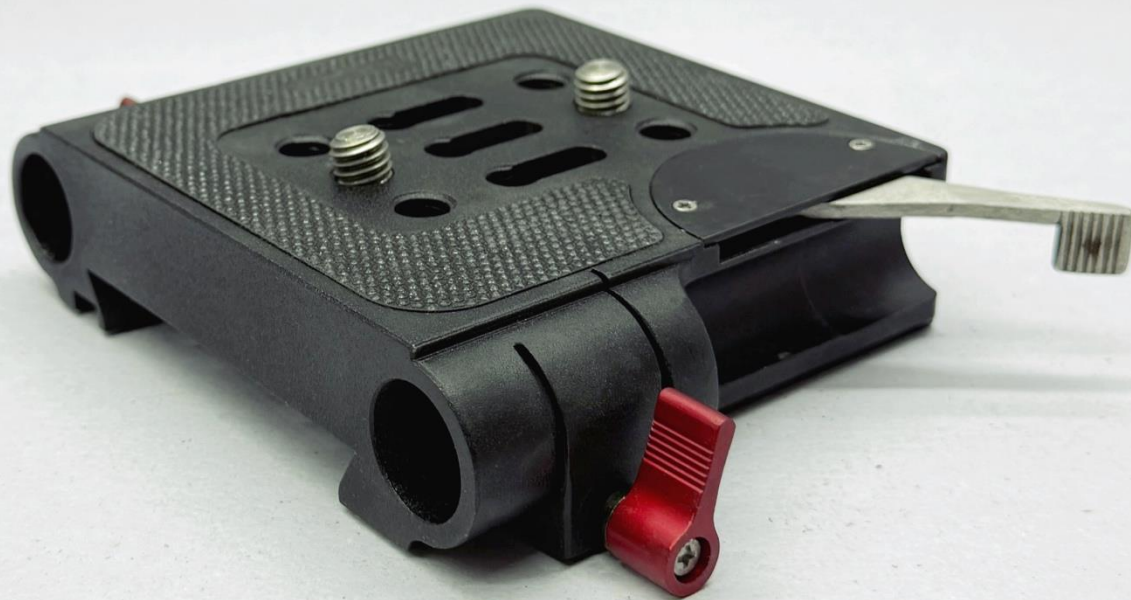
A robust and versatile bridge plate designed for professional cinema setups. It supports 19mm rods, offers height adjustability for precise optical alignment, and ensures secure mounting with Arri dovetail compatibility. Built from high-grade aluminium for durability and lightweight performance.

### Key Features:

- Universal Compatibility – Fits most professional cinema cameras.
- 19mm Rod Support – Provides a stable platform for matte boxes, follow focus, and other accessories.
- Adjustable Height Mechanism – Ensures proper optical center alignment.
- Quick-Release System – Swift mounting and dismounting of camera setups.
- High-Grade Aluminum Construction – Lightweight yet highly durable.
- Arri Dovetail Compatible – Works seamlessly with standard Arri-style dovetail plates.

### Kit Contents:

- 19mm universal bridge plate





## 19mm bridge plate for sony fx6/9

### Description:

A precision-engineered bridge plate designed for the Sony FX6 & FX9, providing secure mounting, 19mm rod support, and adjustable height for perfect optical alignment. Compatible with Arri dovetail systems for seamless professional rigging.

### Key Features:

- Designed for Sony FX6 & FX9 – Perfect fit with precise alignment.
- 19mm Rod Support – Stable base for matte boxes, follow focus, and accessories.
- Arri Dovetail Compatible – Works with standard Arri-style dovetail plates.
- Durable Aluminium Build – Lightweight yet highly durable.

### Kit Contents:

- 19mm bridge plate



## double quick release handle with rod block set

### Description:

Telescopic Handles offer versatile and ergonomic control for your camera rig. Designed with ARRI rosettes for secure attachment, these adjustable handles provide enhanced grip and maneuverability during shoots. The built-in rod bloc system allows for seamless integration with 15mm or 19mm rod setups, ensuring a customizable and efficient filming experience.

### Key Features:

- Telescopic Design – Adjustable length for personalized comfort and control.
- ARRI Rosette Compatibility – Secure attachment to various rig components.
- Rod Bloc System – Easy integration with 15mm or 19mm rods for versatile setups.
- Ergonomic Grip – Comfortable handling for extended shooting sessions.
- Durable Construction – Built from high-quality materials for reliable performance.

### Kit Contents:

- Telescopic Handles with ARRI Rosette
- Rod Bloc Mounts (15mm & 19mm)
- Mounting Screws & Hardware

## custom hand grip unit with rosette attachment

### Description:

The Hand Grip features a premium wooden hand grip and a versatile rosette mount for enhanced control and comfort during filming. This extension provides a secure and adjustable connection to your rig, allowing for optimal hand positioning and stability. Its ergonomic design ensures comfortable handling, making it ideal for extended shooting sessions.

### Key Features:

- Premium Wooden Grip – Offers a comfortable and aesthetically pleasing touch.
- Rosette Mount Compatibility – Secure attachment to various rig components for flexible configurations.
- Adjustable Length – Easily modify the extension to suit your shooting style and preference.
- Ergonomic Design – Enhances grip comfort and control during operation.
- Durable Construction – Built to withstand the rigors of professional filmmaking.

### Kit Contents:

- 2x wooden Hand Grip
- 2x brackets with rosette mount
- Mounting Screws & Hardware





## shoulder rig with shoulder pad support and adjustable handles

### Description:

The Shoulder Rig is designed for comfortable and stable handheld shooting, allowing the camera to be mounted securely along with the bridge plate. Featuring a padded shoulder cushion and adjustable handles, this rig provides optimal weight distribution and support, reducing fatigue during extended filming sessions. The shoulder pad mount is compatible with Arri dovetail plates, ensuring seamless integration with various camera setups, making it an essential tool for professional filmmakers seeking comfort and stability on set.

### Key Features:

- Padded Shoulder Cushion – Provides comfort and reduces strain during long shoots
- Adjustable Handles – Customizable positioning for enhanced control and ergonomics
- Arri Dovetail Plate Compatibility – Allows secure mounting of the shoulder pad for versatile setups
- Sturdy Construction – Durable materials ensure reliability in demanding environments
- Universal Compatibility – Works with a wide range of camera systems and accessories
- Lightweight Design – Easy to transport and set up without compromising stability

### Kit Contents:

- Shoulder Rig with Shoulder Cushion
- Adjustable Handles
- Mounting Hardware

## 4"x5.6" light weight clip-on mattebox set

### Description:

The 3-Stage 4"x5.6" Lightweight Clip-On Matte Box is designed for filmmakers seeking flexibility and control over light and lens flares. This matte box features a lightweight design for easy handling and attachment, making it ideal for on-the-go shooting. With three stages for mounting filters, a top flag to block unwanted light, and both 95mm and 110mm lens rings for compatibility with various lenses, this matte box is a versatile addition to any camera rig. Five included masks allow for creative framing and precise light control, ensuring optimal image quality in any shooting scenario.

### Key Features:

- 3-Stage Design – Allows simultaneous use of multiple filters for creative control
- Lightweight Construction – Easy to attach and manoeuvre during shoots
- Top Flag – Blocks stray light for improved image quality
- Multiple Lens Rings – Includes 95mm and 110mm lens rings for compatibility with various lenses
- 5 Included Masks – Offers versatility for framing and light control

### Kit Contents:

- 3-Stage 4"x5.6" Clip-On Matte Box
- Top Flag
- 95mm Lens Ring
- 110mm Lens Ring
- 5x Masks
- Mounting Hardware





## 6.6"x6.6" lightweight clip-on mattebox kit

### Description:

The 6.6"x6.6" Lightweight Clip-On Matte Box is designed for professional filmmakers who require superior control over light and reflections. This matte box features a lightweight and durable design for easy attachment to your camera rig, making it perfect for various shooting environments. With a three-stage configuration for mounting filters, a top flag to minimize lens flares, and compatibility with both 95mm and 110mm lens rings, this matte box offers flexibility for different lenses.

### Key Features:

- 3-Stage Design – Accommodates multiple filters simultaneously for enhanced creative options
- Lightweight Construction – Easy to attach and manoeuvre, ideal for on-the-go filming
- Top Flag – Effectively blocks stray light, improving image clarity
- Multiple Lens Rings – Includes 95mm and 110mm lens rings for versatile compatibility

### Kit Contents:

- 6.6"x6.6" Clip-On Matte Box
- Top Flag
- 95mm Lens Ring
- 110mm Lens Ring
- Mounting Hardware



## 19mm manual follow focus unit

### Description:

The 19mm Manual Follow Focus System is designed for precise and seamless focus adjustments, making it an essential tool for professional cinematographers. Engineered for smooth operation, this system ensures accurate focus pulls while maintaining a sturdy and ergonomic design. With its 19mm rod compatibility, adjustable focus wheel, and durable construction, it integrates effortlessly into high-end camera rigs for a reliable shooting experience.

### Key Features:

- Smooth and Precise Focus Control – Enables accurate focus adjustments for professional cinematography
- Ergonomic Design – Provides a comfortable grip for extended operation
- Adjustable Focus Wheel – Allows for customizable positioning to suit different shooting needs
- 19mm Rod Compatibility – Securely fits industry-standard 19mm rod setups
- Robust Build Quality – Constructed for durability and long-term reliability on set

### Kit Contents:

- Manual Follow Focus Unit
- Focus Wheel
- 19mm Rod Mounting Brackets
- Mounting Hardware

## multifunction camera top plate for sony fx9

### Description:

The multifunction Camera Top Plate is a lightweight, yet durable mounting solution designed specifically for the Sony FX9. It provides multiple threaded mounting points for attaching accessories such as monitors, handles, and wireless transmitters. With a low-profile design, it maintains the camera's balance while ensuring compatibility with industry-standard accessories.

### Key Features:

- Custom Fit for Sony FX9 – Designed for seamless integration with the camera body
- Multiple Mounting Points – Features multiple 1/4"-20 and 3/8"-16 threaded holes for accessory attachment
- Lightweight & Durable – Constructed from high-grade aluminum for strength without added bulk
- Low-Profile Design – Maintains camera balance while allowing flexible rigging options
- ARRI Accessory Mounts – Securely attaches ARRI-standard accessories for professional setups

### Kit Contents:

- Sony FX9 Top Plate
- Mounting Screws & Hardware



## 6" ball head magic arm - 1/4"

### Description:

The 6" Ball Head Magic Arm is a versatile and durable mounting solution for attaching monitors, lights, microphones, and other accessories to your camera rig. With a 1/4" screw mount, fully adjustable ball joints, and a secure locking mechanism, it offers flexible positioning and stability for professional filmmaking setups.

### Key Features:

- 6" Articulating Arm – Provides flexible positioning for various accessories
- 1/4" Screw Mount – Compatible with monitors, lights, and other camera gear
- Ball Head Joints – Allows smooth and precise angle adjustments
- Durable Aluminum Construction – Ensures strength while remaining lightweight
- Secure Locking Mechanism – Keeps accessories firmly in place during use

### Kit Contents:

- 6" Ball Head Magic Arm (1/4")
- Locking Knobs for Secure Adjustment



## articulating magic arm with quick release attachment

### Description:

The Tathastu Articulating Arm is a professional-grade support system designed for securely mounting monitors, lights, and other accessories. Featuring a quick-release attachment, a male 3/8" to male 1/4" adapter, and a 1/4" locking ring, this arm offers smooth articulation and precise positioning. Built with durability in mind, it ensures stability and reliability on set while maintaining a lightweight design for easy handling.

### Key Features:

- Fully Articulating Design – Allows flexible positioning for various accessories
- Quick Release Attachment – Enables fast and secure mounting/removal of gear
- Male 3/8" to Male 1/4" Adapter – Ensures compatibility with a range of camera setups
- 1/4" Mount & Locking Ring – Provides a secure connection and prevents unwanted movement
- Robust Construction – Built for durability while remaining lightweight

### Kit Contents:

- Articulating Arm
- Quick Release Attachment
- Male 3/8" to Male 1/4" Adapter
- 1/4" Mount
- 1/4" Locking Ring



## adjustable monitor cage for 7" LCD monitors

### Description:

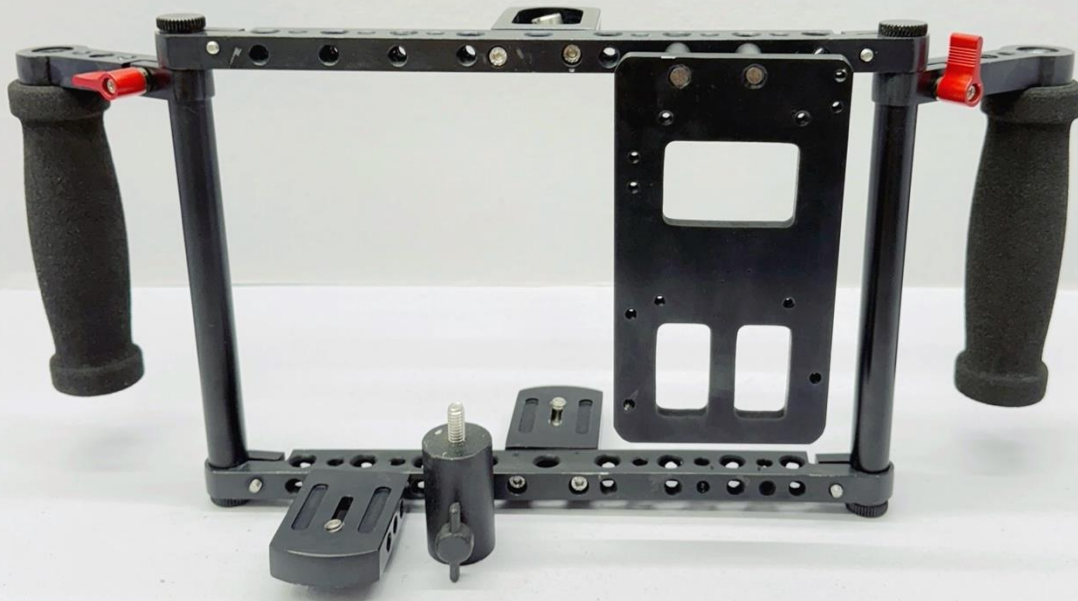
The Adjustable Monitor Cage is a rugged and adaptable solution designed to securely house LCD monitors up to 7 inches. Featuring dual ergonomic side handles, multiple mounting points, and a reinforced frame, this cage enhances stability while providing extensive customization options for professional film and broadcast setups. Its universal mounting base allows seamless integration with tripods, stands, and other rigging accessories, making it an essential tool for on-set monitoring.

### Key Features:

- Adjustable Design – Fits LCD monitors up to 7" for a secure and customizable fit
- Ergonomic Dual Side Handles – Provides a comfortable and stable grip for handheld use
- Multiple Mounting Points – Includes 1/4"-20 and 3/8"-16 threaded holes for attaching accessories
- Integrated Battery/Accessory Plate – Supports additional mounting for power solutions and wireless transmitters
- Durable Aluminum Construction – Ensures lightweight yet robust protection for the monitor
- Universal Mounting Base – Compatible with tripods, stands, and other rigging systems

### Kit Contents:

- Adjustable Monitor Cage (Up to 7")
- Dual Ergonomic Handles
- Battery/Accessory Mounting Plate
- Mounting Screws & Hardware
- Universal Base Plate
- 5/8" (16mm) stand attachment





## 6" dovetail plate

### Description:

The 6" Camera Dovetail Plate is a precision-machined mounting solution designed for quick and secure camera balancing. Built from high-grade aluminum, this lightweight yet durable plate is compatible with ARRI-style bridge plates and tripod heads, ensuring smooth and efficient fore-aft adjustments for optimal weight distribution. The ventilated design reduces weight while maintaining structural integrity, making it an essential accessory for professional filmmakers.

### Key Features:

- 6" Length – Provides a compact yet stable platform for camera mounting
- Quick Balancing – Allows fore-aft adjustments for precise camera positioning
- ARRI-Style Compatibility – Works with standard bridge plates and tripod heads
- Lightweight & Durable – High-grade aluminum construction ensures strength without extra weight
- Ventilated Design – Reduces weight while maintaining structural integrity

### Kit Contents:

- 6" camera dovetail plate



## 12" dovetail plate

### Description:

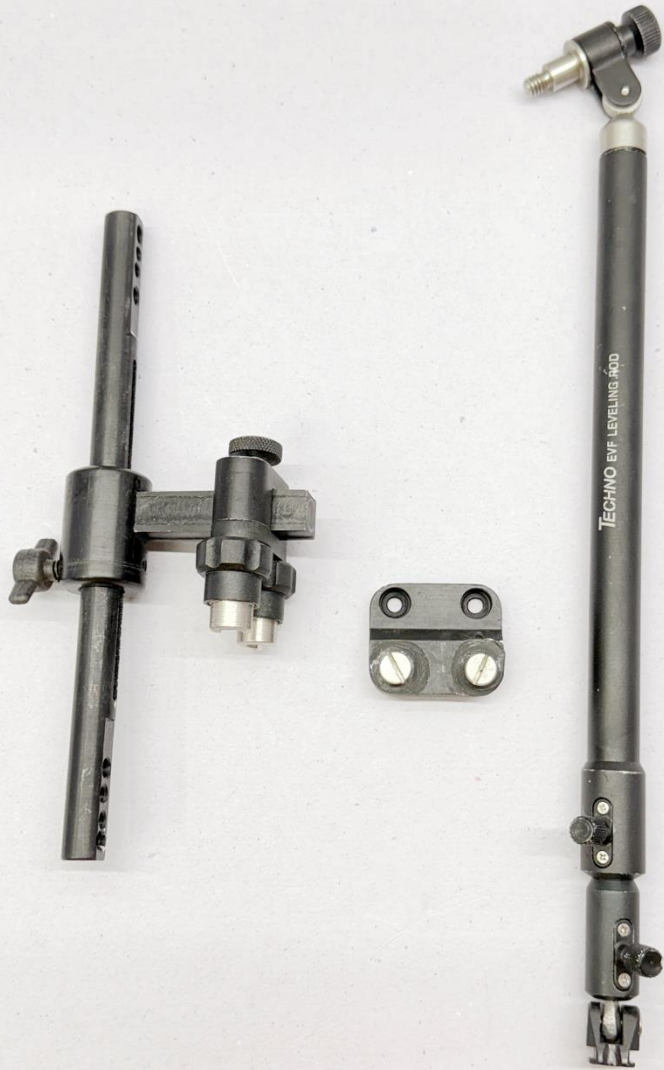
The 12" Camera Dovetail Plate is a professional-grade mounting solution designed for smooth and precise camera balancing. With its extended 12-inch length, this plate provides enhanced stability and flexibility for larger camera rigs. Constructed from high-grade aluminum, it remains lightweight while ensuring durability. Compatible with ARRI-style bridge plates and tripod heads, it enables quick fore-aft adjustments, making it ideal for dynamic shooting environments.

### Key Features:

- 12" Length – Offers extended support for larger camera setups
- Quick Balancing – Enables smooth fore-aft adjustments for precise weight distribution
- ARRI-Style Compatibility – Works with industry-standard bridge plates and tripod heads
- Lightweight & Durable – CNC-machined aluminum construction ensures strength without excess weight
- Multiple Mounting Points – Includes 1/4"-20 and 3/8"-16 threaded holes for accessory flexibility
- Ventilated Design – Reduces overall weight while maintaining structural integrity

### Kit Contents:

- 12" camera dovetail plate



## Viewfinder levelling rod

### Description:

The Viewfinder Levelling Rod is a precision-engineered accessory designed to provide smooth and adjustable positioning for an optical or electronic viewfinder. Built with robust yet lightweight aluminum, it ensures stability and durability while allowing precise height and angle adjustments.

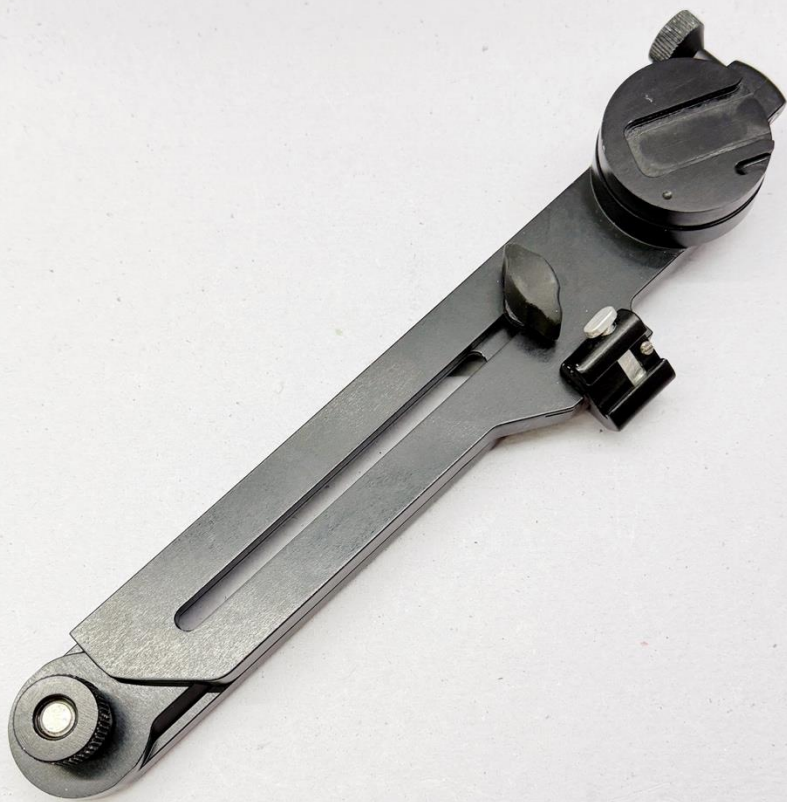
Compatible with industry-standard mounts, this leveling rod is an essential tool for professional cinematographers seeking optimal viewing alignment.

### Key Features:

- Adjustable Height & Angle – Ensures precise positioning for comfortable viewing
- Smooth Articulation – Allows effortless movement and stability during use
- Durable Aluminium Construction – Lightweight yet strong for long-term reliability
- Industry-Standard Compatibility – Works with most professional camera rigs and viewfinders
- Secure Locking Mechanism – Prevents unwanted shifts for stable framing

### Kit Contents:

- Viewfinder Levelling Rod
- Mounting Hardware



## Viewfinder extension bracket

### Description:

The Viewfinder Extension Bracket is a durable and adjustable mounting solution designed to extend the reach of your electronic viewfinder. Built from high-grade aluminum, this lightweight yet sturdy bracket allows for precise positioning to accommodate various shooting styles. Its universal mounting design ensures compatibility with industry-standard cameras and rigs, making it an essential tool for professional cinematographers.

### Key Features:

- Extended Reach – Provides additional positioning flexibility for viewfinders
- Adjustable Design – Allows precise alignment for optimal comfort and viewing angle
- Durable & Lightweight – CNC-machined aluminium construction ensures strength without excess weight
- Industry-Standard Compatibility – Works with most professional camera rigs and viewfinders
- Secure Locking Mechanism – Ensures stability during operation

### Kit Contents:

- Viewfinder extension bracket



## adjustable battery bracket for 19mm support

### Description:

The Adjustable Battery Bracket is a versatile and secure mounting solution designed for professional camera rigs with 19mm rod support. It allows precise positioning of battery plates and power solutions, ensuring balanced weight distribution for optimal performance. Built from high-grade aluminum, it offers durability while remaining lightweight. Ideal for V-Mount and Gold Mount battery plates, this bracket enhances power management on set.

### Key Features:

- Adjustable Design – Enables flexible battery plate positioning for perfect balance
- 19mm Rod Compatibility – Securely mounts onto industry-standard 19mm support rods
- Durable & Lightweight – CNC-machined aluminium construction for strength without excess weight
- Universal Mounting – Works with V-Mount and Gold Mount battery plates
- Secure Locking System – Prevents unwanted movement during operation

### Kit Contents:

- Adjustable Battery Bracket
- 19mm Rod Clamps
- Mounting Screws & Hardware



## 90° handle extension

### Description:

The 90° Handle Extension is a rugged and ergonomic solution designed to extend and reposition camera handles for enhanced control and comfort. Its precisely machined aluminum construction ensures durability while maintaining a lightweight profile. The 90-degree angle design allows for better grip positioning, making it ideal for handheld and shoulder-mounted setups. Compatible with ARRI-style, it seamlessly integrates with professional camera rigs.

### Key Features:

- 90° Design – Optimizes handle positioning for improved ergonomics and control
- ARRI-Style Mount – Ensures universal compatibility with industry-standard handles
- Lightweight & Durable – CNC-machined aluminium construction for strength without added bulk
- Secure Locking Mechanism – Provides a stable and firm grip without unwanted movement
- Versatile Mounting – Works with handgrips, extensions, and rig components

### Kit Contents:

- 90° extension handle

## lens support bracket – 19mm

### Description:

The 19mm Lens Support is a sturdy and adjustable solution designed to provide extra stability for heavy cinema lenses mounted on 19mm rod support systems. Built from high-grade aluminum, this support minimizes lens strain and prevents unwanted shifts, ensuring optimal performance during shoots. The adjustable height mechanism allows seamless compatibility with various lens sizes, making it an essential accessory for professional camera setups.

### Key Features:

- 19mm Rod Compatibility – Securely mounts onto industry-standard 19mm support rods
- Adjustable Height – Accommodates a wide range of lens diameters
- Enhanced Lens Stability – Reduces strain and prevents lens movement
- Durable & Lightweight – CNC-machined aluminium construction for long-lasting use
- Quick & Secure Locking System – Ensures firm attachment without tool-heavy adjustments

### Kit Contents:

- 19mm lens support bracket



## PI mount lens back cap - airtight

### Description:

The Clear PL Mount Lens Cap is a protective and transparent solution designed to keep dust, moisture, and debris away from your PL-mount lenses. The clear design allows for quick visual inspection without removing the cap, while the rubber seal ensures a secure and airtight fit, preventing contaminants from reaching the lens mount. Built from high-quality acrylic and durable rubber, this cap is an essential accessory for safeguarding your lenses during storage and transport.

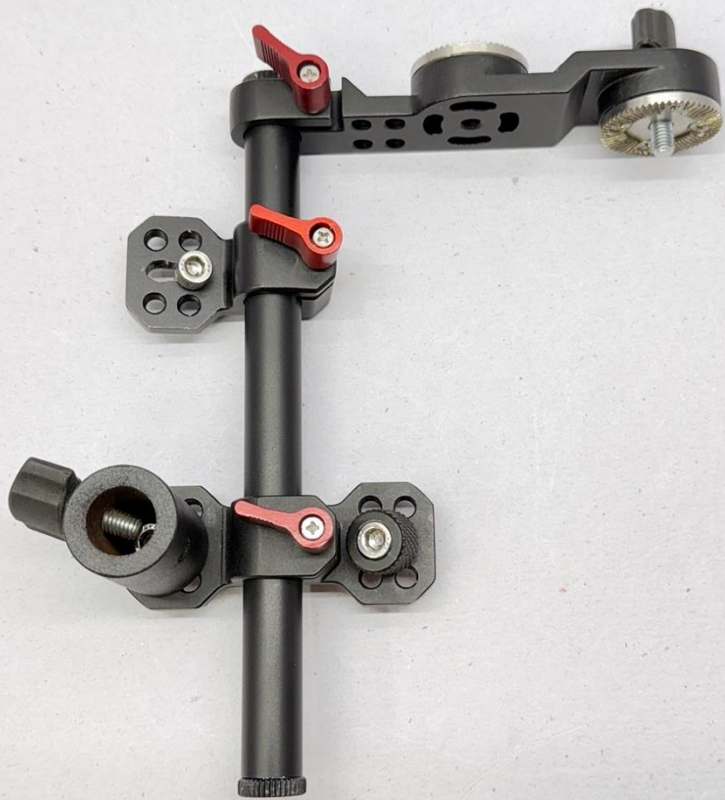
### Key Features:

- Clear Design – Enables quick lens inspection without removing the cap
- Secure Rubber Seal – Provides an airtight fit to protect against dust and moisture
- Precision Fit – Designed specifically for PL mount lenses
- Durable Construction – Made from high-quality acrylic and rubber for long-term use
- Lightweight & Compact – Easy to carry and store without adding bulk

### Kit Contents:

- Clear PL Mount Lens Cap with Rubber Seal





## accessory bracket for wlcs with rosette mount & 5/8" (16mm) stand attachment

### Description:

The Accessory Bracket is a versatile mounting solution designed for Wireless Lens Control Systems (WLCS). Featuring an ARRI-style rosette mount for secure attachment and a 5/8" (16mm) stand adapter, this bracket ensures stability and flexibility in any professional setup. Built from high-grade aluminum, it provides durability while remaining lightweight, making it an essential tool for focus pullers and camera assistants.

### Key Features:

- ARRI-Style Rosette Mount – Ensures secure and adjustable WLCS positioning
- 5/8" (16mm) Stand Attachment – Compatible with industry-standard light stands and rig setups
- Durable & Lightweight – CNC-machined aluminum construction for long-lasting reliability
- Versatile Mounting – Easily integrates with follow focus, wireless motors, and accessories
- Secure Locking Mechanism – Prevents unwanted movement for stable operation

### Kit Contents:

- Accessory Bracket for WLCS
- Rosette Mounting Screws & Hardware
- 5/8" (16mm) Stand Adapter